



Icom America Inc.

Quick Reference Tutorial



▲ IC-F3161DT/T

▲ IC-F4161DS/S



IDAS

ICOM DIGITAL ADVANCED SYSTEM

DIGITAL FEATURES

Programming for

Call Alert



Icom America Inc.

Before You Program

Desired Action:

- Call Alert allows you to send an alert signal to another radio, or group of radios, so that it can respond back.

Assumptions:

- Proper frequencies are entered
- Proper RAN codes are entered
- Proper squelch is set
- Radio is 6.25kHz capable (UT-119H/126H).



Icom America Inc.

Programming Call Alert

In Zone Operation: Set Zone Type to Conventional.

The screenshot shows a software interface with a tree view on the left and a table on the right. The tree view shows 'Memory CH' expanded to 'Zone Operation', with a list of zones 1 through 12. The table on the right is titled 'Zone Operation' and has columns for 'Zone', 'Text', 'Zone Type', and 'P'. A dropdown menu is open for the 'Zone Type' column of zone 2, showing options: 'Conventional', 'SmarTrunk', 'LTR', 'IDAS-Trunk', and 'Voting'.

Zone	Text	Zone Type	P
1		Conventional	
2		Conventional	
3		SmarTrunk	
4		LTR	
5		IDAS-Trunk	
6		Voting	



Icom America Inc.

Programming Call Alert

In Memory Channel 1, set **CH Type** to **Digital**.

The screenshot shows the 'Memory CH' window with 'Zone 1: (Left CH - 496)' selected. A table displays the settings for channels 1-1 through 1-6. Channel 1-1 is set to 'Digital', while others are 'Analog'. A dropdown menu is open for channel 1-1, showing options: 'Analog', 'Mixed-Ana : Mixed & TX=Analog', 'Mixed-Digi : Mixed & TX=Digital', and 'Digital' (highlighted).

CH	Auto Scan	CH Type	Auto Reset	CH Mute
1- 1		Digital	Tim-B	OR
1- 2		Analog		
1- 3		Mixed-Ana : Mixed & TX=Analog		
1- 4		Mixed-Digi : Mixed & TX=Digital		
1- 5		Digital		
1- 6				



Icom America Inc.

Programming Call Alert

- In **Unit ID**, enter your unique radio ID.
- Set **Squelch Type** to **Sel** (Selective), if you want the squelch to open with the proper RAN *and* Talk Group or Individual ID.

Zone 1: (Left CH - 496)							
Digital						MDC	
CH	Log	RX RAN	TX RAN	Unit ID	Talkgroup List No.	Squelch Type	System
1- 1		1	<-	1004	1	Sel	
1- 2						OFF : OFF	
1- 3						RAN : RAN	
1- 4						: Selective	
1- 5							
1- 6							



Icom America Inc.

Programming Call Alert

- Go to **Digital -> Individual -> Individual ID.**
- Enter all Individual ID Names and numeric IDs of the other radios in the system you wish to contact. This alias list is used when selecting other radios for Selective Calling, Call Alerts, etc.

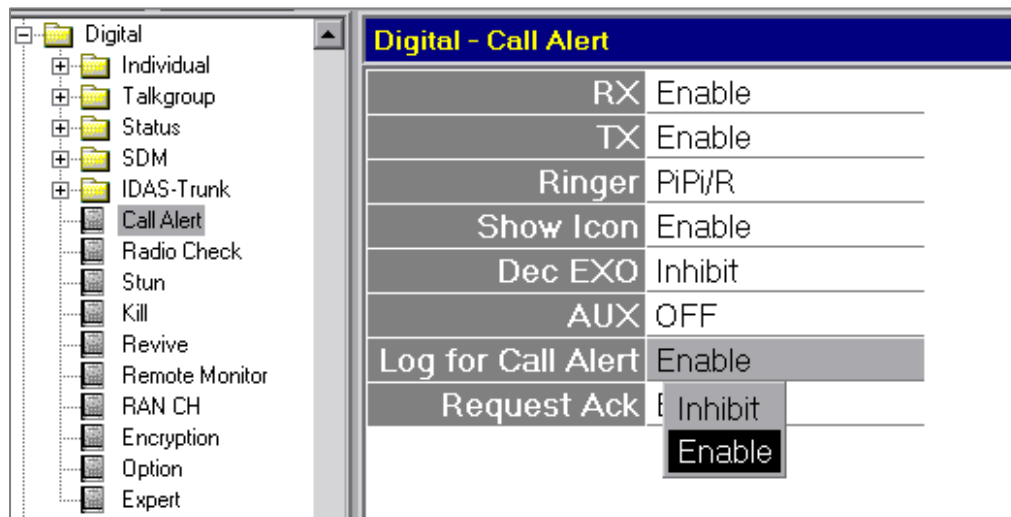
Digital - Individual - Individual ID List		
ID		
No.	ID	ID Name
1	1001	John
2	1002	Paul
3	1003	George
4	1004	Ringo
New		



Icom America Inc.

Programming Call Alert

- Go to the **Call Alert** window and set **RX** to **Enable** to be able to receive a Call Alert.
- Set **TX** to **Enable** to be able to transmit a Call Alert.
- Set **Log for Call Alert** to **Enable** if you want to save the record (log) of all received Call Alerts.





Icom America Inc.

Programming Call Alert

- Go to **Common -> Key & Display** and assign a **Digital Button** to one of the programmable keys.

Key & Display Assign	
Key	
Mobile / Portable	Conventional
P0 / P0	Digital Button
P1 / P1	Null
P2 / P2	Null
P3 / P3	Null
P4 / Side1	Null
Up / Side2	CH Up
Down / Side3	CH Down
OPF0 / Emer	Null

- Write the file into the radio.
- The radio is now enabled for Call Alert.



Icom America Inc.

Programming Call Alert

To Send a Call Alert

1. Press *and hold* the key assigned for Digital calls. The display will briefly show INDIVIDUAL or TALKGROUP.
2. If you want to change from either INDIVIDUAL or TALKGROUP, press and hold the key to return to the memory channel display, then press and hold to select the option you want.
3. Press the up/down keys to select CALALERT.
4. Press the programmed key again to bring up the list of individual IDs.
5. Scroll to the desired radio ID by pressing the Up/Down keys.
6. Press PTT. The target radio will show CALLALRT and show your radio's ID. If successful, your display will show CA OK. If it failed, your display will show CA FAIL.